

embark

BUSSELTON



The Riviera

From **\$875,990***



4



2



2

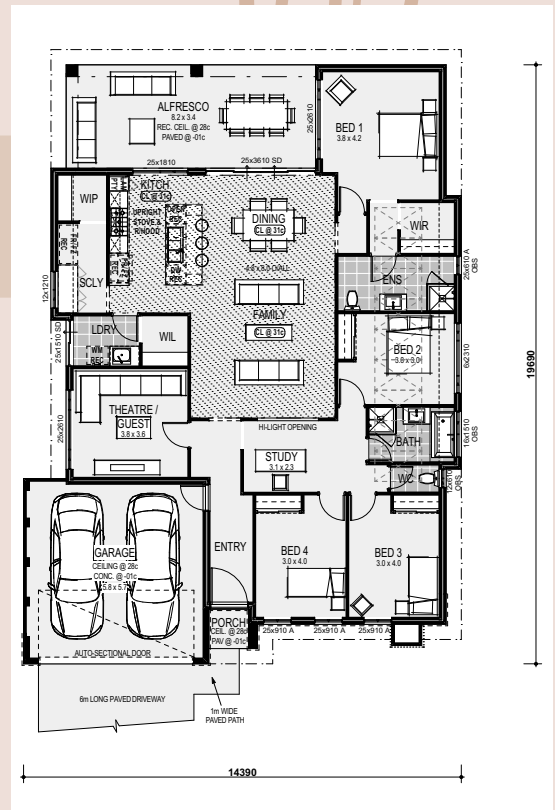


18m



540m²

- Siteworks Allowance
- 7 star Energy Efficiency
- Solar PV system
- Internal Wall Painting
- Reverse Cycle Ducted Air Conditioning
- Vinyl plank flooring to living areas & Carpets to all Bedrooms & Theatre
- Roller blinds to all windows and sliding doors
- Choice of 5 feature front elevations
- 31c high ceilings to Kitchen, Family & Dining areas
- 28c high ceiling to Garage & Alfresco
- Stone benchtops throughout
- Upgraded Designer Kitchen with freestanding oven, overhead cupboards, pot drawers and entertainers 1200mm island bench
- 1.6m wide scullery cabinets (where shown)
- 1m wide Laundry cabinetry
- Mirrored sliders to all robe recesses
- Fully customisable plans and elevations



New Home Consultant
Clive Weeden 0402 049 559

* Terms and conditions apply. See builder website and specific package for full terms and conditions. Price correct at time of publication and is subject to change. Images and landscaping are for illustrative purposes. House and land sold separately. Yolk Property Group is not the builder of the home. The home is advertised by agreement between Yolk Property Group and the builder, Home Group WA BRN 12773. Advertised price does not include transfer duty, settlement costs and other settlement of the land fees. Provisional sum for site works included in price.

embark
BUSSELTON

Embark Busselton Stage 3C Land Release 1

Release Date: Wednesday 10 September 2025
Time: 5pm AWST



Be among the first to secure a wide-frontage lot in Embark Busselton, a stunning new masterplanned community that puts you at the heart of it all. Build your dream home and stay close to everything you love about life in the South West, with a brand-new town centre just steps away.

Why Embark Busselton?



Minutes from the bay, beach, and iconic Busselton Jetty



Trails, playgrounds, and wildlife on your doorstep



Beautiful lakes, landscaped parks, and majestic trees



Masterplanned community with brand-new town centre including childcare, a supermarket, gym, medical, pharmacy, and more.

A new chapter in Down South Living

Be among the first to secure a wide-frontage lot in Embark Busselton, a stunning new masterplanned community that puts you at the heart of it all. Build your dream home and stay close to everything you love about life in the South West, with a brand-new town centre just steps away.

Brand new Town Centre

Designed as the vibrant village heart of the community, sunlit squares, tree-lined streets, pocket parks, and welcoming spaces create a walkable, social hub that grows with you. Imagine mornings at the café, afternoons at the future playground, and all your everyday needs within easy reach — childcare, a supermarket, gym, medical, pharmacy, and more.



This is your chance to be part of a thriving, connected, and lively new neighbourhood in Busselton — don't miss it.



Legend

- Stage 3 release boundary
- Future Display Village
- Stage 3C Release 1
- Future Stage 3C Release
- Over 55's Lifestyle Land Lease
- Previous Releases
- A Package A (Acoustic)
- BAL 29
- BAL 19
- BAL 12.5
- Power Dome
- Water
- Opticomm

Note: Due to boundary and POS location constraints, the product mix and percentage does vary to our proposed standard lot mix and quantities.

STAGE 3C
Wide frontage lots and a prime central location close to future shops and a feature playground.

Sales agents

Katherine & Ryan Severn
sales@realtimerealty.com.au

Realty Realty

Crafted by **YOLK PROPERTY GROUP**

embark
BUSSETON

*Town Centre, District Open Space and Over 55's Lifestyle Land Lease design subject to Council approval.