

embark

BUSSELTON



The Beaufort

From **\$599,690***



LOT 25, MARRI RELEASE



4



2



2



15m



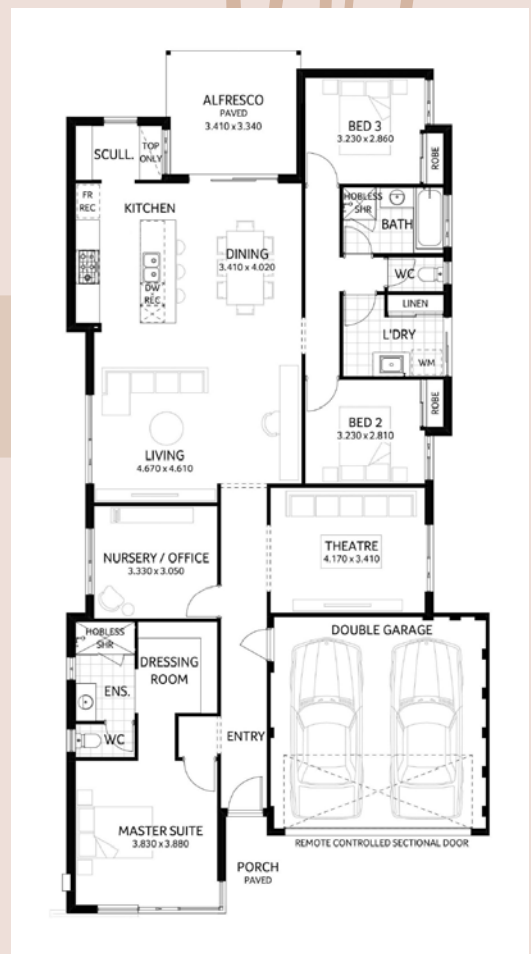
524m²

The Beaufort Home offers old world charm with modern style interior. Plunkett homes offer a great selection of products including interior designer to get the home you require.

- Feature Elevation
- Fully Ducted Reverse Cycle Air Con
- Interior Wall Painting
- Kitchen 900MM Appliances
- Kitchen / Essa Stone BenchTops
- Ensuite / Bathroom Walk In Showers
- Ensuite / Bathroom Large Range Tapware - Tiles
- Interior Design Consultation

New Home Consultant

Kim Taylor 0424 148 906



* Terms and conditions apply. See builder website and specific package for full terms and conditions. Price correct at time of publication and is subject to change. Images and landscaping are for illustrative purposes. House and land sold separately. Yolk Property Group is not the builder of the home. The home is advertised by agreement between Yolk Property Group and the builder, Plunkett Homes BC 7995. Advertised price does not include transfer duty, settlement costs and other settlement of the land fees. Provisional sum for site works included in price.

Two Jetty Lengths from Town



10 reasons to build here...

- 1 Largest master planned project near town
- 2 Georgiana Molloy Anglican School within walking distance
- 3 Well established community, parks and playgrounds
- 4 NEW local shops, town centre, feature playground and more in the plan
- 5 Bigger blocks sizes to fit more life in
- 6 Under 5 mins drive from Busselton town centre
- 7 Close to world-class bays, beaches, forests, caves and wineries
- 8 Just 30mins drive to Bunbury
- 9 Busselton is the events capital of WA offering year-round events and community fun
- 10 Surrounded by an abundance of natural beauty

Stage 1 - Marri Release



Register your interest today, visit embarkbusselton.com.au

Sales agent **AREA** Australian Real Estate Agency

Katherine Severn | 0438 904 494

embark
BUSSELTON

Crafted by **YOLK PROPERTY GROUP**