

# embark

BUSSELTON



## The Infinite

From **\$609,900\***



LOT 21, WOODLAND RELEASE



4



2



2



15m



524m<sup>2</sup>

An impressive four bedroom family home. Ideal for popular 15m blocks, this home ensures that you and your family have everything with a dedicated children's wing - including a massive activity room - and an enormous open-plan living/dining/kitchen area that flows through to the alfresco.

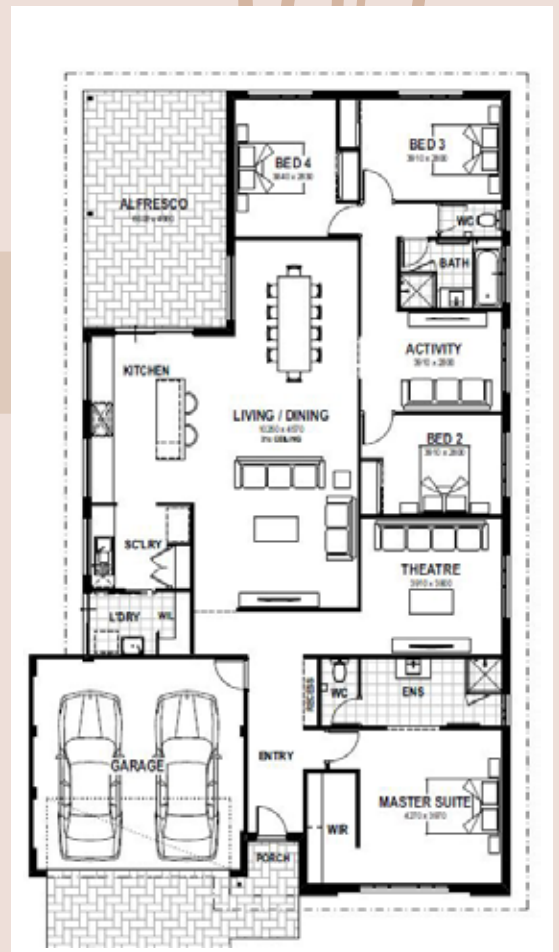
Parents can also escape to their own retreat with the luxurious master suite - complete with its own ensuite and walk-in robe - positioned at the front of the home for privacy.

The theatre is perfectly positioned for movie nights in or with friends to watch the footy.

Site works allowances including earthworks, bushfire (BAL) engineering/footings, power, water and sewer run-ins, soakwells and crossover allowance.

New Home Consultant

**Shannon Scott 08 9722 0341**



\* Terms and conditions apply. See builder website and specific package for full terms and conditions. Price correct at time of publication and is subject to change. Images and landscaping are for illustrative purposes. House and land sold separately. Yolk Property Group is not the builder of the home. The home is advertised by agreement between Yolk Property Group and the builder, Summit South West BC 10689. Advertised price does not include transfer duty, settlement costs and other settlement of the land fees. Provisional sum for site works included in price.

# Two Jetty Lengths from Town



Busselton

## 10 reasons to build here...

- 1 Largest master planned project near town
- 2 Georgiana Molloy Anglican School within walking distance
- 3 Well established community, parks and playgrounds
- 4 NEW local shops, town centre, feature playground and more in the plan
- 5 Bigger blocks sizes to fit more life in
- 6 Under 5 mins drive from Busselton town centre
- 7 Close to world-class bays, beaches, forests, caves and wineries
- 8 Just 30mins drive to Bunbury
- 9 Busselton is the events capital of WA offering year-round events and community fun
- 10 Surrounded by an abundance of natural beauty

### Stage 1 - Woodland Release



Register your interest today, visit [embarkbusselton.com.au](http://embarkbusselton.com.au)

Sales agent **AREA** Australian Real Estate Agency

**Katherine Severn** | 0438 904 494

**embark**  
BUSSELTON

Crafted by

