



The Cedar Traditional Farmhouse

From **\$687,000***



LOT 59, CANOPY RELEASE



4



2



2



34m



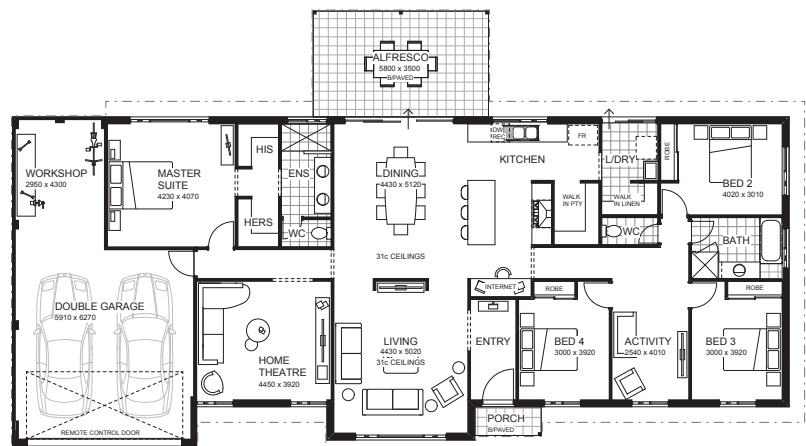
764m²

As you enter the home, you're greeted by the large, open plan living space. The grand space creates seamless views from the front verandah, to the alfresco.

- Huge kitchen & scullery
- 4x2 + Home Theatre + Activity + Alfresco
- Secure workshop inside garage
- 31c high ceilings to living areas
- 20mm stone benchtops throughout
- Quality Flooring
- Ducted reverse cycle airconditioning

New Home Consultant

Steve Merrick 0409 997 735



* Terms and conditions apply. See builder website and specific package for full terms and conditions. Price correct at time of publication and is subject to change. Images and landscaping are for illustrative purposes. House and land sold separately. Yolk Property Group is not the builder of the home. The home is advertised by agreement between Yolk Property Group and the builder, WA Country Builders BC 11422. Advertised price does not include transfer duty, settlement costs and other settlement of the land fees. Provisional sum for site works included in price.

Two Jetty Lengths

from Town



Busselton

10 reasons to build here...

- 1 Largest master planned project near town
- 2 Georgiana Molloy Anglican School within walking distance
- 3 Well established community, parks and playgrounds
- 4 NEW local shops, town centre, feature playground and more in the plan
- 5 Bigger blocks sizes to fit more life in
- 6 Under 5 mins drive from Busselton town centre
- 7 Close to world-class bays, beaches, forests, caves and wineries
- 8 Just 30mins drive to Bunbury
- 9 Busselton is the events capital of WA offering year-round events and community fun
- 10 Surrounded by an abundance of natural beauty

Stage 1 - Canopy Release



Register your interest today,
visit embarkbusselton.com.au

Sales agent **AREA** Australian Real Estate Agency

Katherine Severn | 0438 904 494

embark

BUSSELTON

Crafted by  **YOLK PROPERTY GROUP**